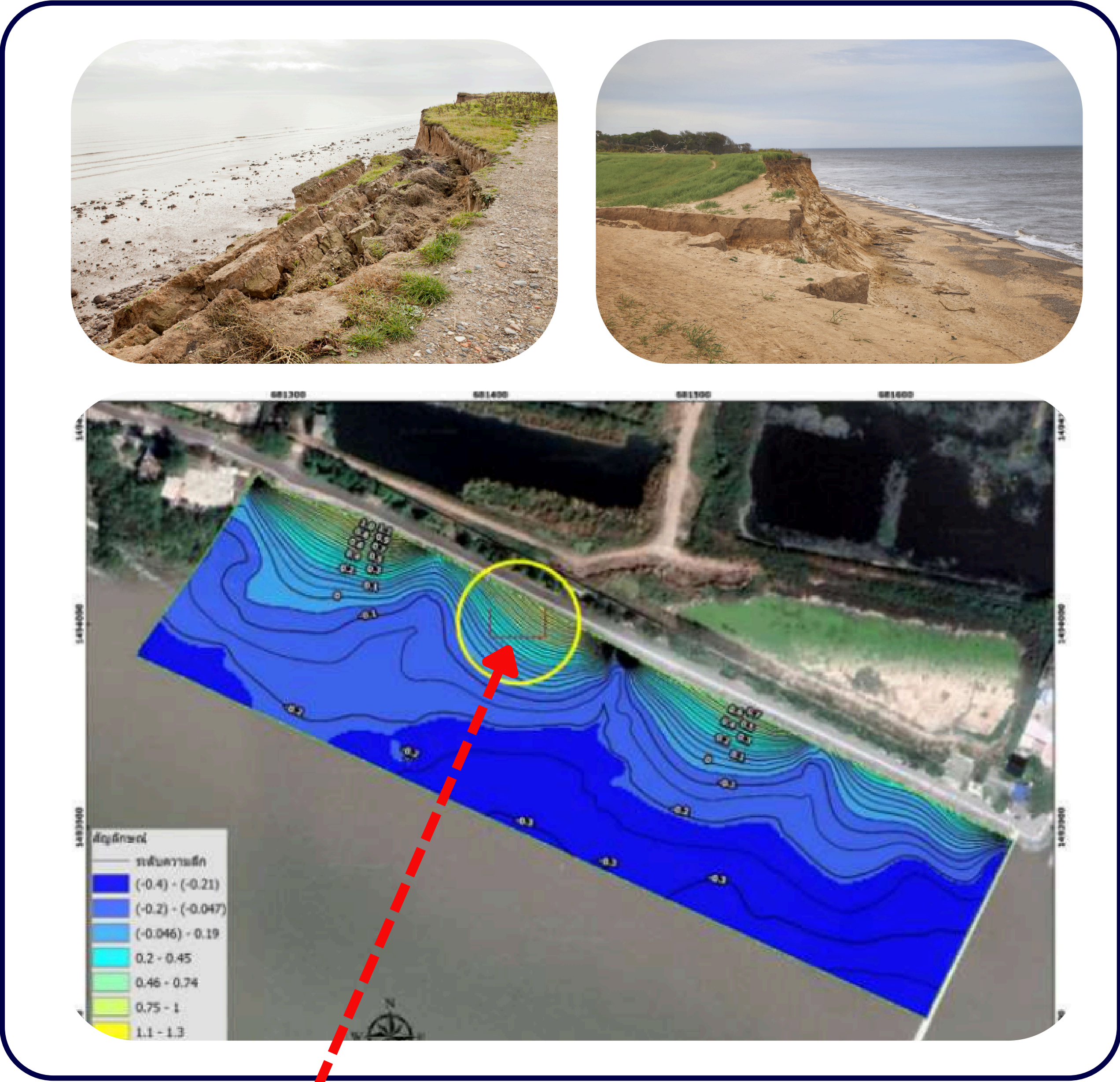


RUBBER NATURAL PARA SEA COMB™ COASTAL PROTECTION AND FINE SEDIMENTS ACCUMULATION

The objective of this project is to research and develop a rubber product that can be used for coastal protection and fine sediments accumulation. Rubber chemical formulations of dry natural rubber (NR) and synthetic rubbers, such as (ethylene propylene diene rubber (EPDM)



How it works

1 COASTAL EROSION SITUATION

• Coastal Erosion along the Gulf of Thailand

Coastal erosion occurs along the shorelines of all provinces surrounding the Gulf of Thailand. Erosion has been observed from the eastern coastline to the western coast of the Gulf of Thailand, with some areas showing increasingly severe trends. Provinces experiencing critical erosion, with rates exceeding 5 meters per year, include 12 provinces: Chanthaburi, Rayong, Chachoengsao, Samut Prakan, Bangkok, Phetchaburi, Prachuap Khiri Khan, Surat Thani, Nakhon Si Thammarat, Songkhla, Pattani, and others. Additionally,

many areas face erosion rates between 1-5 meters per year.

The inner Gulf of Thailand, particularly from the mouth of the Bang Pakong River to the Tha Chin River estuary, experiences the most severe erosion.

• Coastal Erosion along the Andaman Sea

Coastal erosion along the Andaman Sea occurs along the shorelines of all provinces, although to a lesser extent than the Gulf of Thailand. Provinces with severe erosion, with average rates exceeding 5 meters per year, include Ranong, Phuket, Krabi, Trang, and Satun. Areas with moderate erosion rates of 1-5 meters per year are found in all provinces along this coastline.

